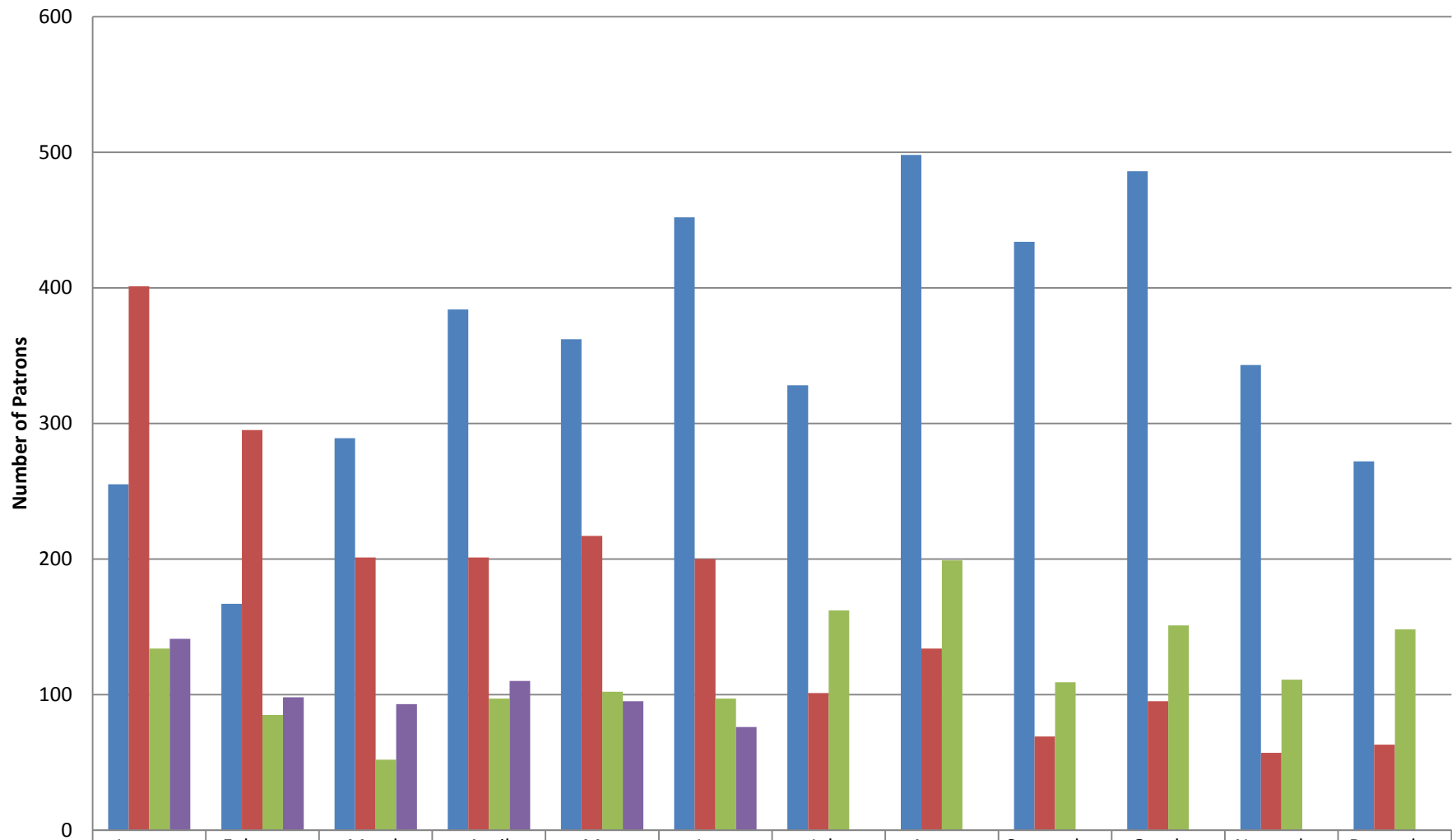


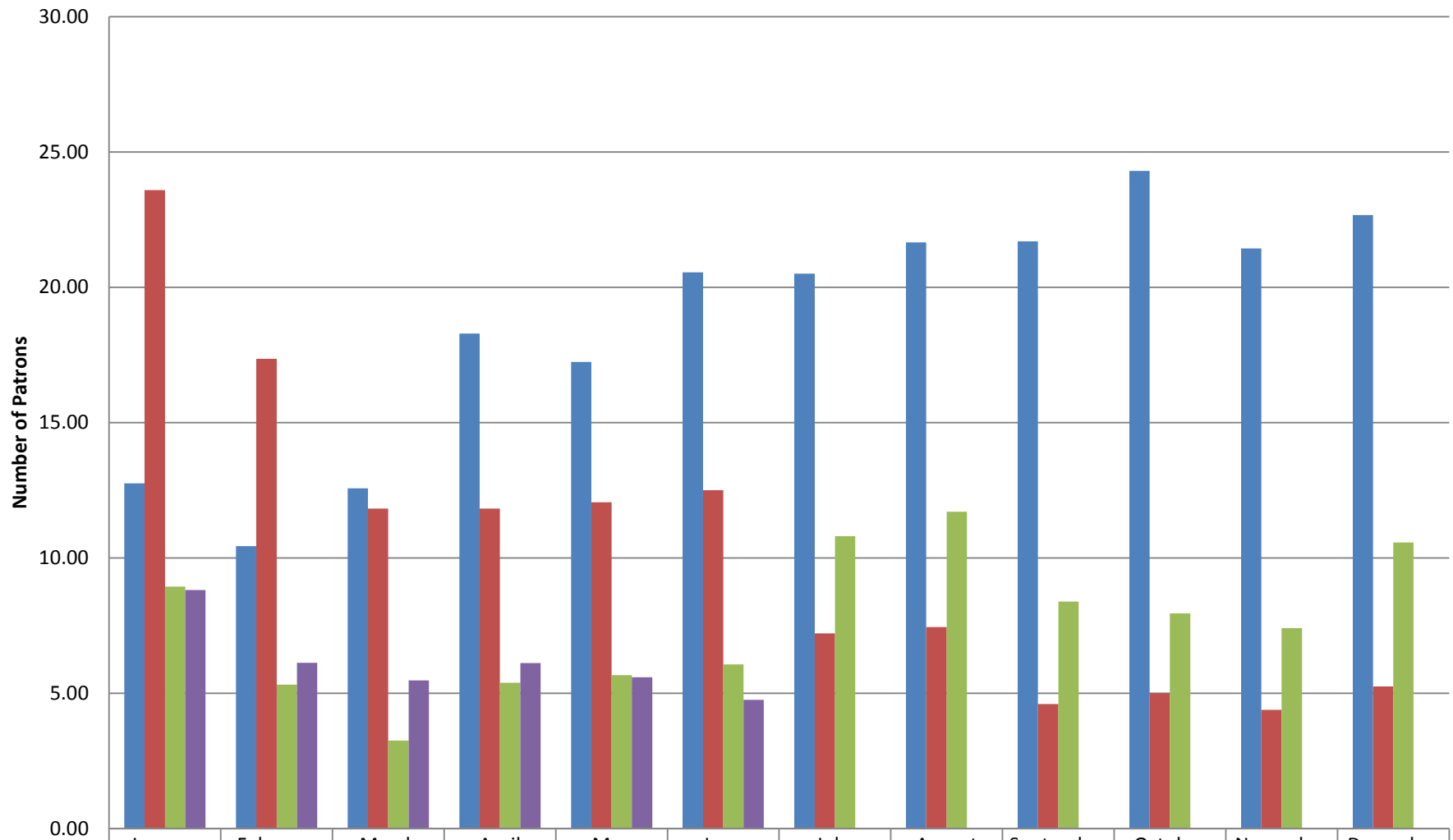
Total Library Usage - Patron Count



2011	255	167	289	384	362	452	328	498	434	486	343	272
2012	401	295	201	201	217	200	101	134	69	95	57	63
2013	134	85	52	97	102	97	162	199	109	151	111	148
2014	141	98	93	110	95	76						

	2011	2012	2013	2014
January	255	401	134	141
February	167	295	85	98
March	289	201	52	93
April	384	201	97	110
May	362	217	102	95
June	452	200	97	76
July	328	101	162	
August	498	134	199	
September	434	69	109	
October	486	95	151	
November	343	57	111	
December	272	63	148	

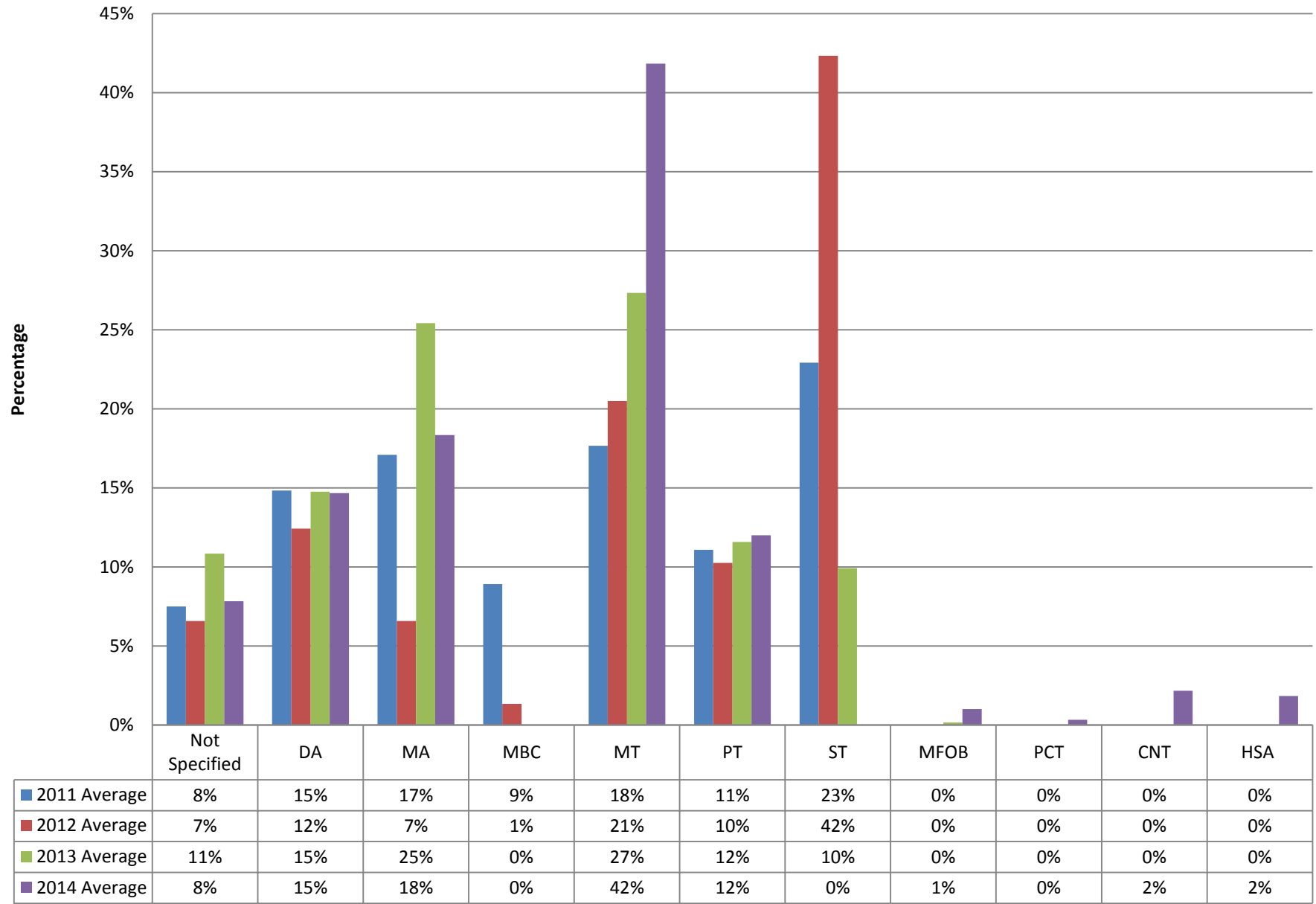
Average Number of Patrons Per Day



	January	February	March	April	May	June	July	August	September	October	November	December
■ 2011	12.75	10.44	12.57	18.29	17.24	20.55	20.50	21.65	21.70	24.30	21.44	22.67
■ 2012	23.59	17.35	11.82	11.82	12.06	12.50	7.21	7.44	4.60	5.00	4.38	5.25
■ 2013	8.93	5.31	3.25	5.39	5.67	6.06	10.80	11.71	8.38	7.95	7.40	10.57
■ 2014	8.81	6.13	5.47	6.11	5.59	4.75						

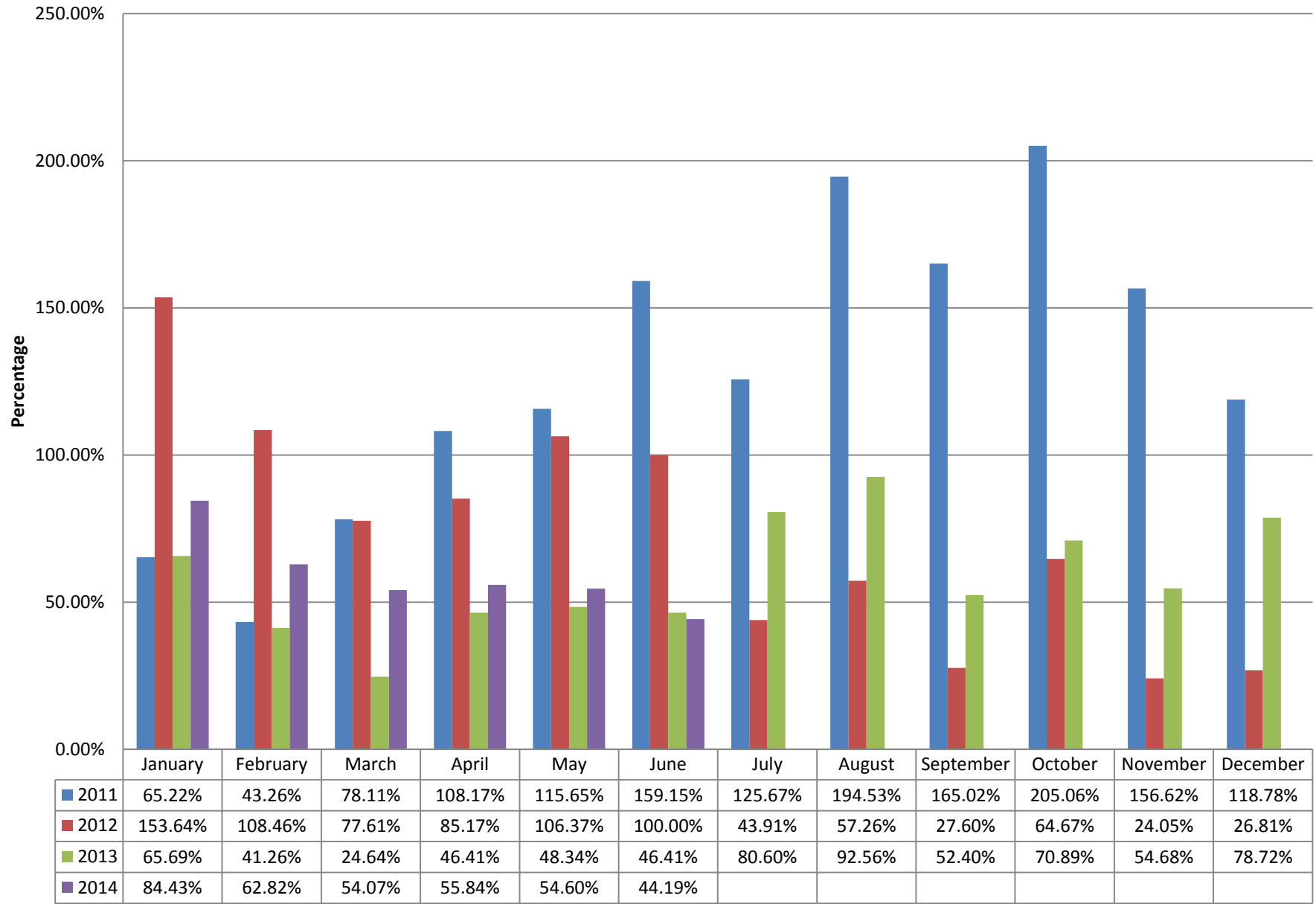
	2011	2012	2013	2014
January	12.75	23.59	8.93	8.81
February	10.44	17.35	5.31	6.13
March	12.57	11.82	3.25	5.47
April	18.29	11.82	5.39	6.11
May	17.24	12.06	5.67	5.59
June	20.55	12.50	6.06	4.75
July	20.50	7.21	10.80	
August	21.65	7.44	11.71	
September	21.70	4.60	8.38	
October	24.30	5.00	7.95	
November	21.44	4.38	7.40	
December	22.67	5.25	10.57	

Percentage of Library Use by Program



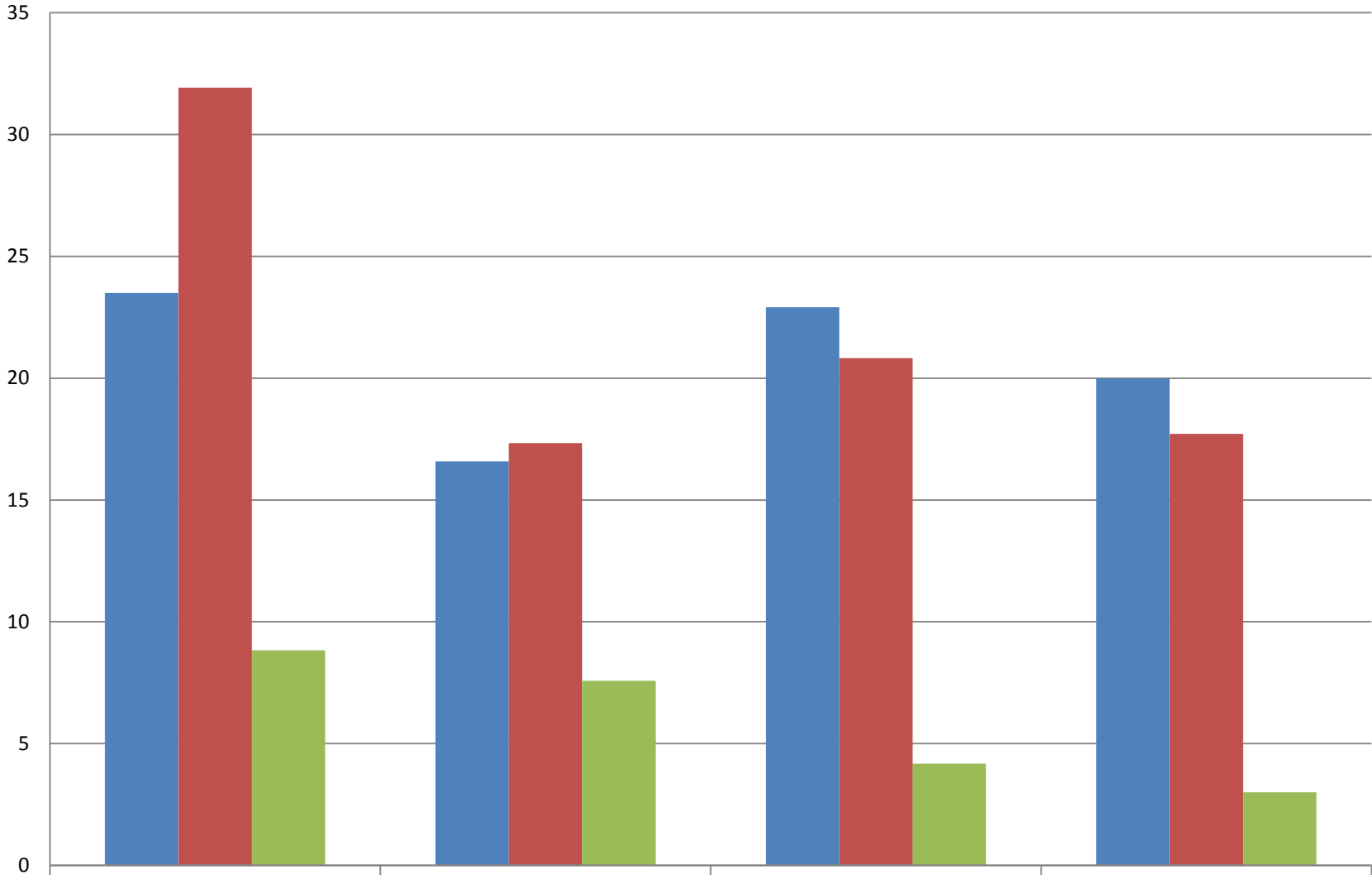
	Not Specified	DA	MA	MBC	MT	PT	ST	MFOB	PCT	CNT	HSA
Jan. 2011	5%	12%	34%	18%	8%	11%	12%	0%	0%	0%	0%
Feb. 2011	16%	14%	30%	13%	13%	9%	5%	0%	0%	0%	0%
Mar. 2011	8%	17%	28%	10%	23%	7%	7%	0%	0%	0%	0%
Apr. 2011	11%	20%	17%	7%	12%	7%	26%	0%	0%	0%	0%
May. 2011	11%	18%	16%	10%	11%	9%	25%	0%	0%	0%	0%
June. 2011	7%	18%	15%	8%	15%	15%	22%	0%	0%	0%	0%
July. 2011	7%	10%	13%	9%	34%	6%	21%	0%	0%	0%	0%
Aug. 2011	7%	11%	10%	11%	20%	9%	32%	0%	0%	0%	0%
Sept. 2011	7%	12%	11%	10%	14%	10%	36%	0%	0%	0%	0%
Oct. 2011	4%	16%	10%	8%	17%	16%	29%	0%	0%	0%	0%
Nov. 2011	3%	15%	8%	2%	22%	19%	31%	0%	0%	0%	0%
Dec. 2011	4%	15%	13%	1%	23%	15%	29%	0%	0%	0%	0%
2011 Average	8%	15%	17%	9%	18%	11%	23%	0%	0%	0%	0%
Jan. 2012	3%	13%	7%	7%	32%	7%	31%	0%	0%	0%	0%
Feb. 2012	7%	19%	6%	5%	21%	7%	35%	0%	0%	0%	0%
Mar. 2012	6%	8%	4%	1%	27%	8%	46%	0%	0%	0%	0%
Apr. 2012	4%	10%	2%	3%	5%	4%	72%	0%	0%	0%	0%
May. 2012	8%	10%	5%	0%	16%	9%	52%	0%	0%	0%	0%
June. 2012	5%	15%	1%	0%	23%	4%	52%	0%	0%	0%	0%
July. 2012	10%	5%	2%	0%	7%	1%	75%	0%	0%	0%	0%
Aug. 2012	4%	6%	2%	0%	29%	8%	51%	0%	0%	0%	0%
Sept. 2012	6%	9%	7%	0%	10%	25%	43%	0%	0%	0%	0%
Oct. 2012	16%	26%	13%	0%	1%	16%	28%	0%	0%	0%	0%
Nov. 2012	5%	14%	17%	0%	46%	9%	9%	0%	0%	0%	0%
Dec. 2012	5%	14%	13%	0%	29%	25%	14%	0%	0%	0%	0%
2012 Average	7%	12%	7%	1%	21%	10%	42%	0%	0%	0%	0%
Jan. 2013	23%	18%	15%	0%	34%	3%	7%	0%	0%	0%	0%
Feb. 2013	26%	16%	26%	0%	13%	4%	15%	0%	0%	0%	0%
Mar. 2013	2%	21%	23%	0%	6%	13%	35%	0%	0%	0%	0%
Apr. 2013	12%	4%	20%	0%	15%	30%	19%	0%	0%	0%	0%
May. 2013	9%	12%	42%	0%	4%	18%	15%	0%	0%	0%	0%
June. 2013	16%	24%	25%	0%	7%	9%	19%	0%	0%	0%	0%
July. 2013	7%	38%	29%	0%	10%	12%	4%	0%	0%	0%	0%
Aug. 2013	8%	8%	38%	0%	20%	23%	3%	0%	0%	0%	0%
Sept. 2013	10%	2%	18%	0%	52%	17%	1%	0%	0%	0%	0%
Oct. 2013	7%	10%	33%	0%	44%	6%	0%	0%	0%	0%	0%
Nov. 2013	5%	0%	26%	0%	62%	4%	1%	2%	0%	0%	0%
Dec. 2013	5%	24%	10%	0%	61%	0%	0%	0%	0%	0%	0%
2013 Average	11%	15%	25%	0%	27%	12%	10%	0%	0%	0%	0%
Jan. 2014	10%	29%	16%	0%	35%	9%	0%	0%	0%	1%	0%
Feb. 2014	2%	30%	13%	0%	48%	4%	0%	0%	0%	0%	3%
Mar. 2014	6%	5%	28%	0%	44%	9%	0%	1%	0%	2%	5%
Apr. 2014	6%	1%	16%	0%	45%	27%	0%	2%	1%	2%	0%
May. 2014	10%	7%	15%	0%	54%	8%	0%	0%	0%	3%	3%
June. 2014	13%	16%	22%	0%	25%	15%	0%	3%	1%	5%	0%
2014 Average	8%	15%	18%	0%	42%	12%	0%	1%	0%	2%	2%

Library Usage as a Percentage of Active Population



	2011	2012	2013	2014
January	65.22%	153.64%	65.69%	84.43%
February	43.26%	108.46%	41.26%	62.82%
March	78.11%	77.61%	24.64%	54.07%
April	108.17%	85.17%	46.41%	55.84%
May	115.65%	106.37%	48.34%	54.60%
June	159.15%	100.00%	46.41%	44.19%
July	125.67%	43.91%	80.60%	
August	194.53%	57.26%	92.56%	
September	165.02%	27.60%	52.40%	
October	205.06%	64.67%	70.89%	
November	156.62%	24.05%	54.68%	
December	118.78%	26.81%	78.72%	

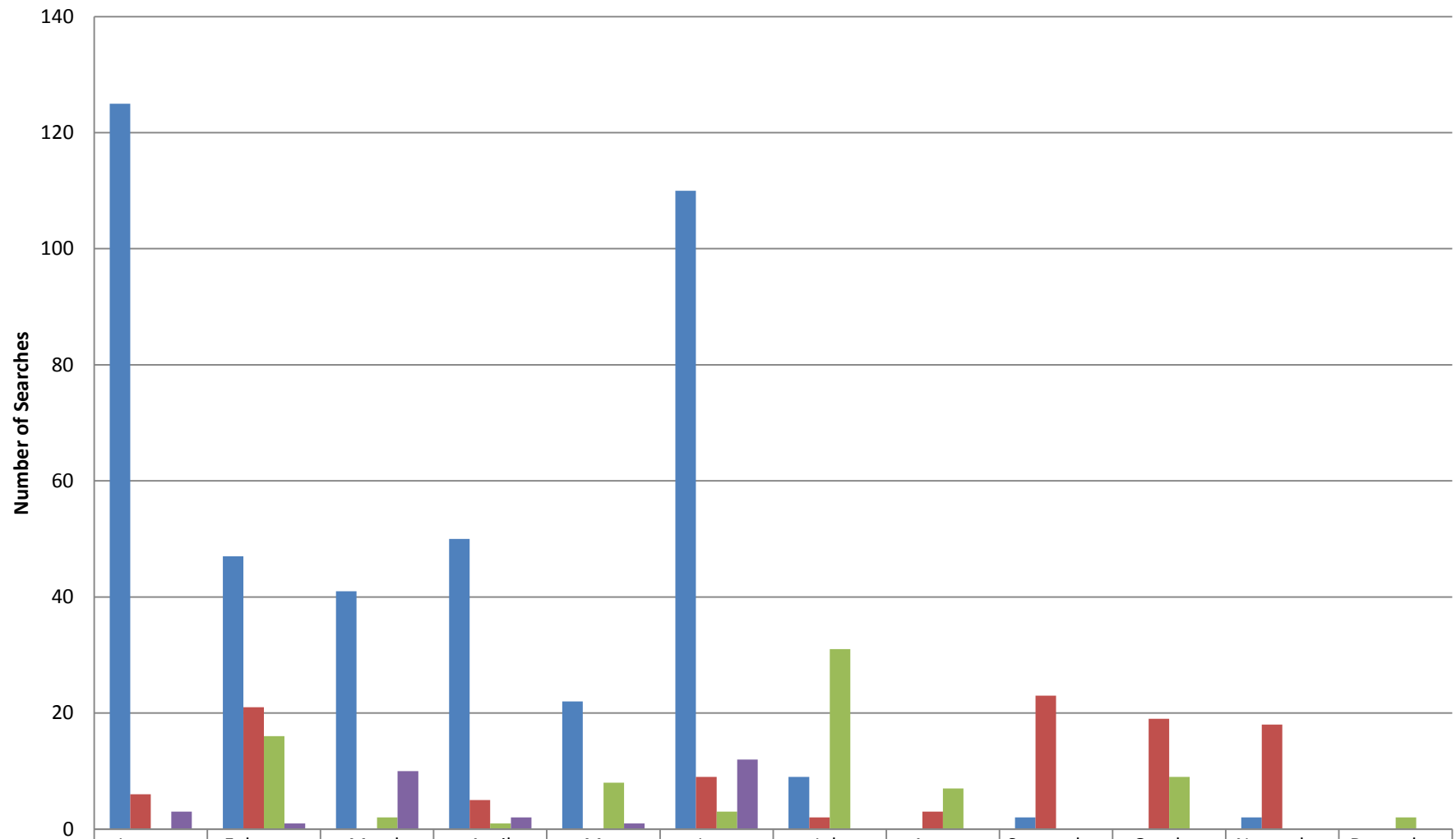
Circulation Activity



	2011 Average	2012 Average	2013 Average	2014 Average
Checkouts	23.5	16.58333333	22.90909091	20
Checkins	31.91666667	17.33333333	20.81818182	17.71428571
Renews	8.83333333	7.58333333	4.18181818	3

	Checkouts	Checkins	Renews
Jan. 2011	16	13	4
Feb. 2011	24	17	0
Mar. 2011	14	15	3
Apr. 2011	27	84	4
May. 2011	24	67	8
June. 2011	46	54	17
July. 2011	24	20	13
Aug. 2011	30	21	14
Sept. 2011	26	33	14
Oct. 2011	21	29	15
Nov. 2011	17	23	9
Dec. 2011	13	7	5
2011 Average	23.5	31.91667	8.83333
Jan. 2012	21	18	2
Feb. 2012	19	22	6
Mar. 2012	15	17	2
Apr. 2012	31	13	5
May. 2012	26	45	13
June. 2012	25	18	17
July. 2012	11	11	21
Aug. 2012	8	6	11
Sept. 2012	11	10	6
Oct. 2012	10	12	7
Nov. 2012	17	23	0
Dec. 2012	5	13	1
2012 Average	16.583333	17.33333	7.58333
Jan. 2013	21	4	1
Feb. 2013	12	23	1
Mar. 2013	19	13	0
Apr. 2013	8	9	3
May. 2013	29	30	8
June. 2013	19	15	3
July. 2013	27	25	6
Aug. 2013	47	36	5
Sept. 2013	10	15	6
Oct. 2013	43	39	6
Nov. 2013	17	20	7
2013 Average	22.909091	20.81818	4.18182
Dec. 2013	9	9	6
Jan. 2014	8	10	1
Feb. 2014	17	13	2
Mar. 2014	22	13	4
Apr. 2014	34	30	3
May. 2014	29	24	4
June. 2014	21	25	1
2014 Average	20	17.71429	3

OPAC Searches



2011	125	47	41	50	22	110	9	0	2	0	2	0
2012	6	21	0	5	0	9	2	3	23	19	18	0
2013	0	16	2	1	8	3	31	7	0	9	0	2
2014	3	1	10	2	1	12						

	2011	2012	2013	2014
January	125	6	0	3
February	47	21	16	1
March	41	0	2	10
April	50	5	1	2
May	22	0	8	1
June	110	9	3	12
July	9	2	31	
August	0	3	7	
September	2	23	0	
October	0	19	9	
November	2	18	0	
December	0	0	2	